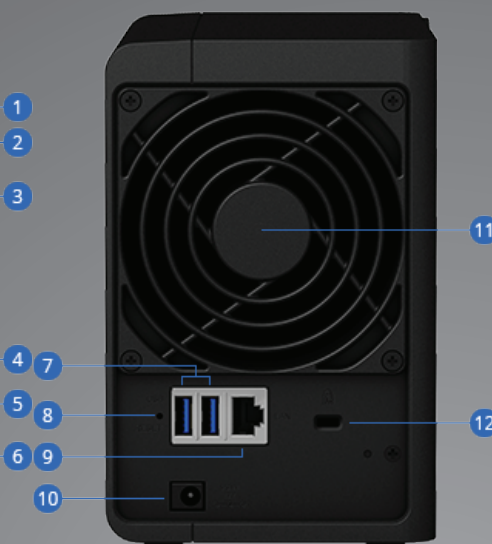


DiskStation DS218



- 1 Status indicator
- 2 LAN indicator
- 3 Drive status indicator
- 4 USB 2.0 port
- 5 USB copy button
- 6 Power button and indicator
- 7 USB 3.0 port
- 8 Reset button
- 9 1GbE RJ-45 port
- 10 Power port
- 11 Fan
- 12 Kensington Security Slot

Versatile NAS server for centralized file storage and real-time 4K H.265 video transcoding

Synology DS218 comes with a new 64-bit quad-core processor, delivering excellent data transfer speed, large storage volume management, and 10-bit 4K H.265 video transcoding on the fly.

CPU

Quad-core 1.4GHz

Memory

2GB DDR4

Performance

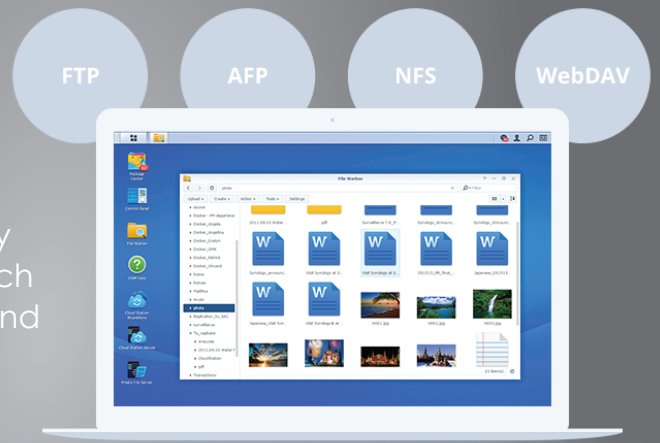
Over 112 MB/s and 112 MB/s sequential read and write

Capacity

Surpass 16TB per single volume

Ultimate file management and sharing

File Station is a web-based, fast and secure management tool built to allow easy, drag-and-drop operation without requiring any complex setup on Mac or PC. Advanced search and filtering tools allow for easy organization and sharing of files with just a link. Supports SMB, FTP, AFP, NFS, WebDAV, compatible with any environment.



Synchronize files across your devices

Cloud Station Suite provides real-time data synchronization across all your devices and other Synology NAS. "Intelliversioning" keeps the most important file versions to better utilize storage space. [Learn more](#)



Cloud Station Sharesync



Cloud Station Drive



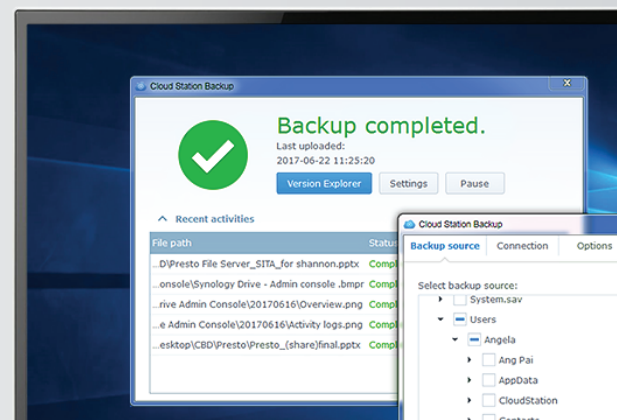
Cloud Station Server

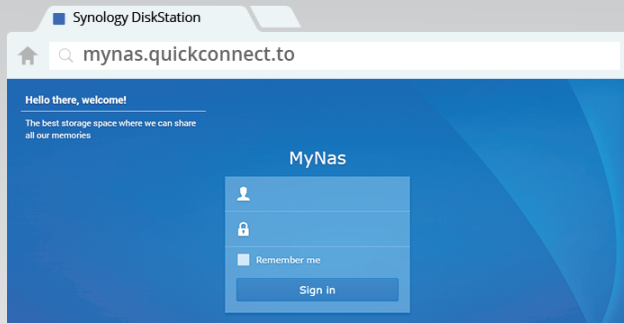


DS Cloud

Easy backup solutions

Back up any computer or mobile device with Synology's comprehensive multi-versioning backup solution. You can protect your computer and NAS against malicious attacks including the rising encryption-based ransomware threats.



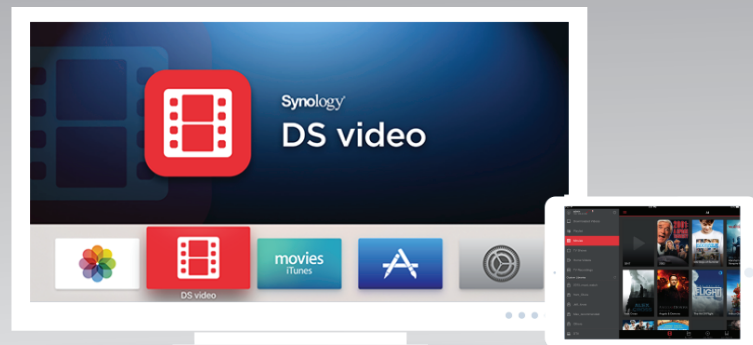


Easy file access with QuickConnect

Access files on your Synology NAS over the Internet without the hassle of setting up port forwarding rules, DDNS, or other complicated network settings. QuickConnect allows you to connect via a secure, customizable address, so that you can instantly access media and work files on any Internet-connected device with no additional charge.

4K Multimedia Server

Access and stream your favorite 4K content anywhere, anytime. DS218 supports 10-bit 4K H.265 online transcoding. With Video Station and DS video, you can convert and play 4K videos from any computer, mobile device, or other media players that don't support Ultra HD formats.



Powered by Synology DSM



Surveillance Station

Complete surveillance solution for recording, monitoring, and management.

[Learn More](#)



Desktop Backup

Simplified backup solution for your Mac, PC, and mobile devices

[Learn More](#)



Public Cloud Integration

Backup and synchronize data easily between your public cloud accounts and your NAS.

[Learn More](#)



DSM UI

Award-winning operating system with an intuitive user interface and powerful capabilities.

[Learn More](#)



Security

Comprehensive built-in security tools are constantly updated to tackle evolving threats and protect your devices.

[Learn More](#)



Multimedia

Complete multimedia solution for management, streaming, and playback.

[Learn More](#)

DiskStation DS218+

All-around storage solution optimized to safeguard your data



Hardware Specifications

CPU


CPU Model	Realtek RTD1296
CPU Architecture	64-bit
CPU Frequency	Quad Core 1.4 GHz
Hardware Encryption Engine (AES-NI)	✓
Hardware Transcoding Engine	10-bit H.265 (HEVC), MPEG-4 Part 2, MPEG-2, VC-1; maximum resolution: 4K (4096 x 2160); maximum frame rate per second (FPS): 60

Memory

System Memory	2 GB DDR4
---------------	-----------

Storage

Drive Bays	2
Compatible Drive Type* (See all supported drives)	3.5" SATA HDD 2.5" SATA HDD 2.5" SATA SSD
Maximum Internal Raw Capacity	24 TB (12 TB drive x 2) (Capacity may vary by RAID types)
Maximum Single Volume Size	108 TB
Hot Swappable Drive	✓

Notes	<ul style="list-style-type: none"> • "Compatible drive type" indicates the drives that have been tested to be compatible with Synology products. This term does not indicate the maximum connection speed of each drive bay. • The maximum single volume size is not directly related to the maximum raw capacity. (Learn more)
External Ports	
RJ-45 1GbE LAN Port	1
USB 3.0 Port	1
eSATA Port	2
Copy Button	
File System	
Internal Drives	<ul style="list-style-type: none"> • Btrfs • EXT4
External Drives	<ul style="list-style-type: none"> • Btrfs • EXT4 • EXT3 • FAT • NTFS • HFS+ • exFAT*
NOTES	exFAT Access is purchased separately in Package Center.
Appearance	
Size (Height x Width x Depth)	165 mm x 108 mm x 232.2 mm
Weight	1.30 kg

Others	
System Fan	92 mm x 92 mm x 1 pcs
Fan Speed Mode	<ul style="list-style-type: none"> • Full-Speed Mode • Cool Mode • Quiet Mode
Brightness adjustable front LED indicators	✓
Power Recovery	✓
Noise Level*	19.3 dB(A)
Scheduled Power On/Off	✓
Wake on LAN/WAN	✓
Power Supply Unit / Adapter	60W
AC Input Power Voltage	100V to 240V AC
Power Frequency	50/60 Hz, Single Phase
Power Consumption*	14.99 W (Access) 5.78 W (HDD Hibernation)
British Thermal Unit	51.15 BTU/hr (Access) 19.72 BTU/hr (HDD Hibernation)
Environment Temperature	
Operating Temperature	0°C to 40°C (32°F to 104°F)
Storage Temperature	-20°C to 60°C (-5°F to 140°F)
Relative Humidity	5% to 95% RH
Certification	<ul style="list-style-type: none"> • EAC • CCC • RCM • KC • FCC • CE • BSMI

Warranty	2 Years
Notes	<ul style="list-style-type: none"> • Power consumption is measured when fully loaded with Western Digital 1TB WD10EFRX hard drive(s). • Noise Level Testing Environment: Fully loaded with Seagate 2TB ST2000VN000 hard drive(s) in idle; Two G.R.A.S. Type 40AE microphones, each set up at 1 meter away from the Synology NAS front and rear; Background noise: 16.49-17.51 dB(A); Temperature: 24.25-25.75°C; Humidity: 58.2-61.8%
DSM Specifications	
Networking Protocols	<ul style="list-style-type: none"> • CIFS • AFP • NFS • FTP • WebDAV • CalDAV • iSCSI • Telnet • SSH • SNMP • VPN (PPTP, OpenVPN, L2TP)
Windows AD Domain Integration	Domain users login via SMB/NFS/AFP/FTP/File Station, LDAP integration
HDD Management	<ul style="list-style-type: none"> • HDD Hibernation • S.M.A.R.T. • Dynamic Bad Sector Mapping
Security	Firewall, encrypted shared folder, SMB encryption, FTP over SSL/TLS, SFTP, rsync over SSH, login auto block, Let's Encrypt support, HTTPS (Customizable cipher suite)
Supported Clients	<ul style="list-style-type: none"> • Windows 7 and 10 • Mac OS X 10.11 onward

Supported Browsers	<ul style="list-style-type: none"> • Chrome • Firefox • Internet Explorer 10 onwards • Safari 10 onwards • Safari (iOS 10 onwards) • Chrome (Android 6.0 onwards)
Supported Language	English, Deutsch, Français, Italiano, Español, Dansk, Norsk, Svenska, Nederlands, Русский, Polski, Magyar, Português do Brasil, Português Europeu, Türkçe, Český,





Storage Management

Maximum Internal Volume Number	256
Maximum iSCSI Target Number	10
Maximum iSCSI LUN	10
iSCSI LUN Clone/Snapshot, Windows ODX	✓
SSD TRIM	✓
Supported RAID Type	<ul style="list-style-type: none"> • Synology Hybrid RAID • Basic • JBOD • RAID 0 • RAID 1
RAID Migration	• Basic to RAID 1
Volume Expansion with Larger HDDs	<ul style="list-style-type: none"> • Synology Hybrid RAID • RAID 1
Volume Expansion by Adding a HDD	• Synology Hybrid RAID

File Sharing Capacity

Maximum Local User Accounts	2048
Maximum Local Groups	256
Maximum Shared Folder	256
Maximum Shared Folder Sync Tasks	2
Maximum Concurrent CIFS/AFP/FTP Connections	500
Maximum Concurrent CIFS/AFP/FTP Connections (with RAM expansion)	200
Windows Access Control List (ACL) Integration	✓
NFS Kerberos Authentication	✓
Log Center	✓
Syslog Events per Second	400

Add-on Packages ([learn more about the complete add-on package list](#))

Chat	
Maximum Users	500
Notes	<ul style="list-style-type: none"> •The number of concurrent HTTP connections for Chat was configured to the maximum. •CPU and RAM usage were both under 80% when the number of maximum users was reached.
Cloud Station Server	
Maximum Number of Concurrently Connected Devices	200
Maximum Number of Hosted Files (btrfs)	1,000,000
Maximum Number of Hosted Files (ext4)	1,000,000
Notes	<ul style="list-style-type: none"> •The maximum number of concurrently connected devices refers to the maximum number of devices that can remain connected at the same time. •The maximum number of hosted files refers to the maximum number of files that can be indexed and hosted by the Cloud Station Server service. RAM expansion was not used during testing. •Non-encrypted shared folders were used during the aforementioned testing.
Download Station	
Maximum Concurrent Download Tasks	80
Drive	
Maximum Number of Hosted Files	100,000
Maximum Number of Concurrent Connections for PC Clients	200

Notes	<ul style="list-style-type: none"> •The Btrfs file system was used for the purpose of testing. The maximum number of hosted files refers to the maximum number of files that can be indexed and hosted by the Drive service. •The maximum number of concurrent connections refers to the maximum number of connections that can be maintained when the maximum number of hosted files was reached. •For tested models with expandable memory, the maximum amount of RAM was installed. •Non-encrypted shared folders were used during the aforementioned testing.
exFAT Access (optional)	✓
Media Server	✓
DLNA Compliance	✓
Moments	✓
Facial recognition	✓
Subject recognition	✓
Office	✓
Maximum Users	200
Notes	<ul style="list-style-type: none"> •Multiple files were opened for testing and each file was edited by 30 users simultaneously. •CPU and RAM usage were both under 80% when the number of maximum users was reached. •Client performance may affect maximum simultaneous editing users. Client PCs used for testing: Intel Core i3-3220 / 8GB RAM Snapshot Replication
Snapshot Replication	✓
Maximum Snapshots per Shared Folder	256
Maximum of system snapshots	4096
Surveillance Station	✓
Maximum IP cam (Licenses required)	20 (including 2 Free License) (See All Supported IP Cameras)
Total FPS (H.264)*	600 FPS @ 720p (1280x720) 300 FPS @ 1080p (1920x1080) 200 FPS @ 3M (2048x1536) 150 FPS @ 5M (2591x1944) 110 FPS @ 4K (3840x2160)
Total FPS (H.265)*	600 FPS @ 720p (1280x720) 300 FPS @ 1080p (1920x1080) 240 FPS @ 3M (2048x1536) 200 FPS @ 5M (2591x1944) 80 FPS @ 4K (3840x2160)
Total FPS (MJPEG)*	240 FPS @ 720p (1280x720) 200 FPS @ 1080p (1920x1080) 130 FPS @ 3M (2048x1536) 80 FPS @ 5M (2591x1944)

Notes	Surveillance Station throughput is tested with Axis network camera, using continuous recording with live view from Surveillance Station and motion detection by camera. Live view and recording are sharing the same stream from the camera.
Video Station	✓
Video Transcoding	4K Group 3 (See more)
Maximum Transcoding Channel Number	<ul style="list-style-type: none"> • 1 channel, 60 FPS @ 4K (4096 x 2160), H.265 (HEVC), 10-bit or • 1 channel, 30 FPS @ 1080p(1920 × 1080), H.264 (AVC)/MPEG-4 Part 2 (XVID, DIVX5)/MPEG-2/VC-1
Notes	
VPN Server	✓
Maximum Connections	15
Environment & Packaging	
Environment	RoHS Compliant
Packaging Content	<ul style="list-style-type: none"> • Main Unit X 1 • Accessory Pack X 1 • AC Power Adapter X 1 • AC Power Cord X 1 • RJ-45 LAN Cable X 1 • Quick Installation Guide X 1
Optional Accessories	<ul style="list-style-type: none"> • Surveillance Device License Pack • D3NS1866L-4G DDR3 non-ECC SO-DIMM • VS360HD • VS960HD